



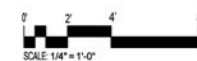
King's Creek, LLC

WEST ELEVATION (CHAMPLAIN STREET, NW)

2329/2335 Champlain Street, NW

Date 01, 2010  
© 2007 - Bonstra | Haresign Architects

1/4" = 1'-0"



Bonstra Haresign



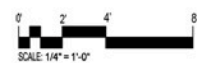
King's Creek, LLC

Date 01, 2010  
© 2007 - Bonstra | Haresign Architects

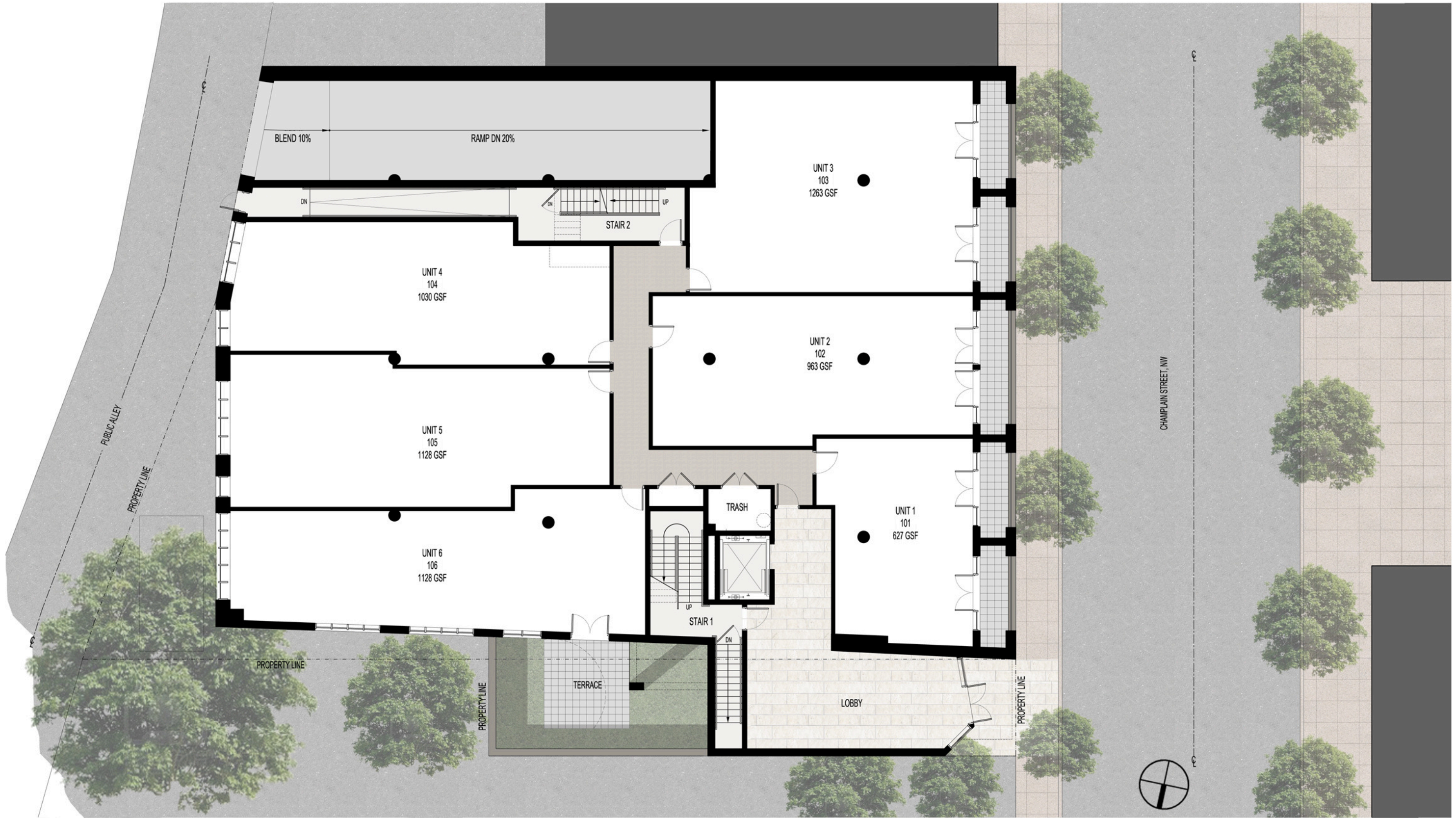
EAST ELEVATION (REAR ALLEY)

1/4" = 1'-0"

2329/2335 Champlain Street, NW



Bonstra Haresign



King's Creek, LLC

Date 01, 2010  
 © 2007 - Bonstra | Haresign Architects

FIRST FLOOR

1" = 6'-0"

2329/2335 Champlain Street, NW



Bonstra Haresign